

CHASELECTION

Recombinant Human Interleukin-18/ IL-18

Catalog Number: CYG044F0XXX、CY044F0XXX

Synonym: IGIF Protein, Human; IL-18 Protein, Human; IL-1g Protein, Human; IL1F4 Protein, Human; Interleukin 18 Protein, Human

Source: *E.coli*

Structure:

Gene ID: 3606

AA Sequence:

YFGKLESKLSVIRNLNDQVLFIDQGNRPLFEDM
TSDCDRDNAPRTIFIISMYKDSQPRGMAVTISVK
CEKISTLSCENKIISFKEMNPPDNIKDTKSDI
IFFQRSVPGHDNKMQFESSYEGYFLACEKERD
LFLKILKKEDLGDRSIMFTVQNED

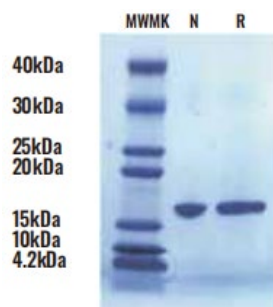
Molecular Weight :

18.2 kDa

Purity:

≥95 % as determined by SDS-PAGE & HPLC.

SDS-PAGE



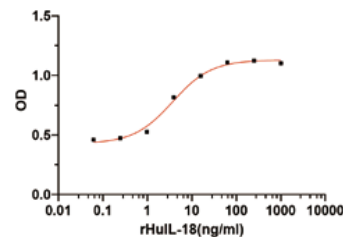
4 µg/lane of Recombinant Human IL-18 was resolved with SDS-PAGE under reducing (R) and non-reducing (NR) conditions and visualized by Coomassie® Blue staining, showing R band at 18kDa.

Endotoxin: <0.1 EU/µg

Formulation:

Lyophilized from a 0.2 µm filtered solution in PBS, 0.02 % Tween-20, pH 7.0

Biological Activity:



Measured by its ability to induce IFN-γ secretion by KG-1 human acute myelogenous leukemia cells. The ED₅₀ is approximately 1.5 - 15 ng/mL, corresponding to a specific activity of ≥ 3.0 × 10⁶ units/mg.

Reconstitution:

Before use this product, please read the direction below carefully.

1. This vial must be briefly centrifuged prior to opening to bring the contents to the bottom.
2. Reconstitute in a sterile aqueous buffer to an appropriate concentration.
3. Stock solutions should be apportioned into working aliquots and stored at ≤ -20 °C. Further dilutions should be made in appropriate buffered solutions.

Shipping & Storage:

The product is shipped with blue ice. Upon receipt, store it immediately at the temperature recommended. For long term storage, the product should be stored ≤ -20 °C.

Please avoid repeated freeze-thaw cycles after reconstitution.

1. At least 24 months from date of receipt, ≤ -20 °C as supplied;
2. 1 month, 2 to 8 °C under sterile conditions after reconstitution;
3. 3 months, -20 to -70 °C under sterile conditions after reconstitution.

Description:

Interleukin-18 (IL-18) is a proinflammatory cytokine in the IL-1 family that exerts distinct immune effects depending on the local cytokine environment. It is expressed as a 24 kDa precursor by endothelial and epithelial cells, keratinocytes, gamma δ T cells, and phagocytes. The precursor is activated intracellularly by Caspase-1 mediated proteolysis to release the 17 kDa mature cytokine. The precursor can also be released by necrotic cells for extracellular cleavage by multiple proteases.

