

CHASELECTION

Recombinant Mouse Leptin, Tag Free

货号(Catalog Number): CY166FXXXX(L)

别名(synonym): LEP; leptin (murine obesity homolog); leptin (obesity homolog, mouse); Leptin; OB; Obese protein.

来源(Source): Human embryonic kidney cell, HEK293-derived mouse Leptin protein

蛋白结构 (Structure): 该蛋白不含标签

基因 ID: P41160

氨基酸序列

Val22-Cys167

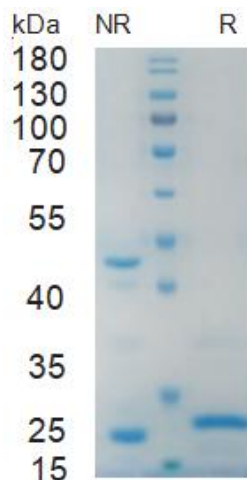
分子量大小(MW)

41.8 kDa

纯度 (Purity)

≥95%, determined by SDS-PAGE

SDS-PAGE



4 ug/lane protein was resolved with SDS-PAGE under non-reducing (NR) and reducing (R) conditions and visualized by Coomassie Blue staining.

制剂(Formulation)

Solution protein.

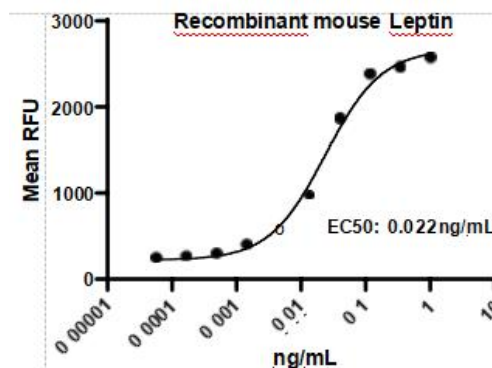
Dissolved in sterile PBS buffer.

This solution can be diluted into other aqueous buffers. Centrifuge the vial prior to opening.

内毒素含量 (Endotoxin)

<0.010 EU per 1 ug of the protein by the LAL method

生物活性 (Bioactivity)



Measured in a cell proliferation assay using PHA-activated human peripheral blood lymphocytes (PBL).

储存与运输(Storage)

Avoid repeated freeze-thaw cycles.

It is recommended that the protein be aliquoted for optimal storage.

36 months from date of receipt, -20 to -70 °C as supplied.

产品背景介绍 (Production)

Leptin is a protein product of the mouse obese gene. Mice with mutations in the obese gene that block the synthesis of Leptin have been found to be obese and diabetic and to have reduced activity, metabolism and body temperature. cDNA clones encoding Leptin have been isolated from human, simian, mouse and rat cells. Mouse Leptin shares approximately 96% and 84% sequence identity with the rat and human protein, respectively. Mouse Leptin cDNA encodes a 167 amino acid residue protein with a 21 amino acid residue signal sequence that is cleaved to yield the 146 amino acid residue mature protein. The expression of Leptin mRNA has been shown to be restricted to adipose tissue. A high-affinity receptor for Leptin (OB-R) with homology to gp130 and the G-CSF receptor has been cloned. OB-R mRNA has been shown to be expressed in the choroid plexus and



in the hypothalamus. OB-R has also been identified as an isoform of B219, a sequence that is expressed in at least four isoforms in very primitive hematopoietic cell populations and in a variety of lymphohematopoietic cell lines. The possible roles of Leptin in body weight regulation, hematopoiesis and reproduction are being investigated.

