

CHASELECTION**Recombinant Mouse MIF, Tag Free**

货号(Catalog Number): CY168FXXXX(L)

别名 (synonym): GIFmacrophage migration inhibitory factor; GLIF; MMIF; Phenylpyruvate tautomerase

来源(Source): Human embryonic kidney cell, HEK293-derived mouse MIF protein

蛋白结构 (Structure):该蛋白不含标签

基因 ID: P34884

氨基酸序列

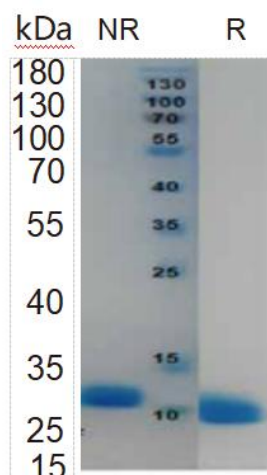
Pro2-Ala115

分子量大小(MW)

13.3 kDa

纯度 (Purity)

> 95%, determined by SDS-PAGE

SDS-PAGE

4 ug/lane protein was resolved with SDS-PAGE under non-reducing (NR) and reducing (R) conditions and visualized by Coomassie Blue staining.

制剂(Formulation)

Solution protein.

Dissolved in sterile PBS buffer.

This solution can be diluted into other aqueous buffers.

Centrifuge the vial prior to opening.

内毒素含量 (Endotoxin)

<0.010 EU per 1 ug of the protein by the LAL method

储存与运输(Storage)

Avoid repeated freeze-thaw cycles.

It is recommended that the protein be aliquoted for optimal storage.

36 months from date of receipt, -20 to -70 °C as supplied.

产品背景介绍 (Production)

MIF (or macrophage migration inhibitory factor) was the first lymphokine/cytokine to be recognized in the pregenomics era. Regardless, it is one of the least understood of all inflammatory mediators. Mouse MIF is a 12.5 kDa, 115 amino acid (aa) nonglycosylated polypeptide that is synthesized without a signal sequence. Secretion occurs nonclassically via an ABCA1 transporter. The initiating Met is removed, leaving Pro as the interact with other MIF molecules, creating a trimer. Structure-function studies suggests MIF is bifunctional with segregated topology. The N- and position #1. Amino acids 3-23 have also been shown to be reminiscent of a GST glutathione-binding domain. MIF has proinflammatory cytokine activity centered on aa's 49-65. On fibroblasts, MIF induces, IL-1, IL-8 and MMP expression; on macrophages, MIF stimulates, NO production and TNF-alpha release following IFN-gamma activation. Mouse MIF apparently acts through CD74 and CD44, likely in some form of trimeric interaction. Mouse MIF is active on human cells, while human MIF is active on mouse cells. Mouse MIF is 99%, 84%, 90%, and 90% aa identical to rat, porcine, bovine and human MIF, respectively.

