

CHASELECTION

Recombinant Mouse IL25/IL17E, Tag Free

货号(Catalog Number): CY159FXXXX(L)

别名(synonym): IL17E; IL-17E; IL25; IL-25; interleukin 25; Interleukin-17E; interleukin-25

来源(Source): Human embryonic kidney cell, HEK293-derived mouse IL25/IL17E protein

蛋白结构 (Structure): 该蛋白不含标签

基因 ID: Q8VHH8

氨基酸序列

Val17-Ala169

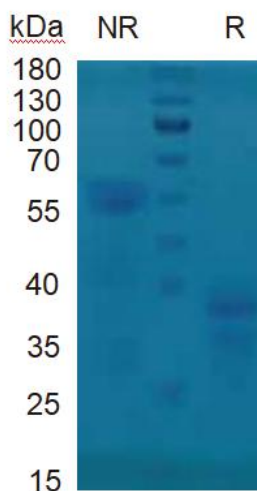
分子量大小(MW)

17.5KDa

纯度 (Purity)

> 95%, determined by SDS-PAGE

SDS-PAGE



4 ug/lane protein was resolved with SDS-PAGE under non-reducing (NR) and reducing (R) conditions and visualized by Coomassie Blue staining.

制剂(Formulation)

Solution protein.

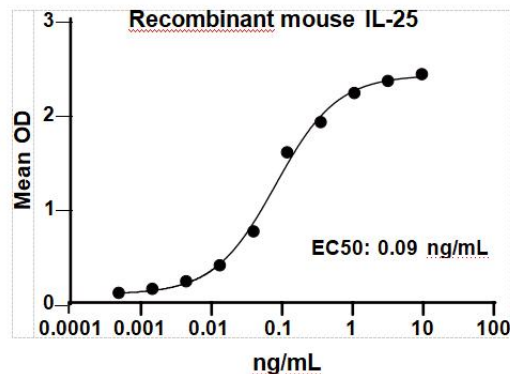
Dissolved in sterile PBS buffer.

This solution can be diluted into other aqueous buffers.
Centrifuge the vial prior to opening.

内毒素含量 (Endotoxin)

<0.010 EU per 1 ug of the protein by the LAL method

生物活性 (Bioactivity)



Measured by its ability to induce CXCL1/GRO alpha secretion in HT-29 human colon adenocarcinoma cells.

储存与运输(Storage)

Avoid repeated freeze-thaw cycles.

It is recommended that the protein be aliquoted for optimal storage.

36 months from date of receipt, -20 to -70 °C as supplied.

产品背景介绍 (Production)

IL-25, which is also known as IL-17E, promotes Th2-biased immune responses. This is in contrast to other IL-17 family members which promote Th1- and Th17-biased inflammation. IL-25 is an important mediator of allergic reactions and protection against intestinal parasites. Mature mouse IL-25 shares 80% and 91% amino acid sequence identity with human and rat IL-25, respectively. During helminth infections and allergic reactions IL-25 is locally up-regulated in intestinal and airway epithelial cells, atopic dermatitis skin lesions, and local Th2 cells, eosinophils, and basophils. It binds to IL-17RB but also requires IL-17RA to exert its activity. IL-25 acts on a variety of cell types which respond with increased production of Th2 cytokines (e.g. IL-4, IL-5, IL-13) and reduced production of Th1 and Th17 cytokines (e.g. IFN-gamma, IL-12, IL-23, IL-17A, IL-17F). Airway IL-25



can be activated by MMP-7, a protease that is up-regulated in airway epithelium in response to allergen exposure . Cleaved IL-25 shows enhanced binding to IL-17 RB and stronger induction of Th2 cytokines. The Th2 cytokines, in turn, trigger expansion of Th2 memory cells and anti-inflammatory M2 macrophages, increased eosinophil mobilization and activation, and dendritic cell migration. These actions promote protective anti-helminth immune responses as well as allergic inflammation and airway hyperreactivity. The IL-25 induced suppression of Th1 and Th17 cytokines limits Th17 cell expansion and disease pathology in autoimmunity and colitis.

