

mouse IL1b protein (280 nm absorbance)

**CHASELECTION****Recombinant Mouse IL-1 beta/IL-1F2****货号(Catalog Number):** CY155FFXXXX(L)**别名(synonym):** IL1 beta; IL-1; IL1B; IL-1b; IL1-BETA; IL-1F2; IL1F2IL-1 beta; interleukin 1-beta**来源(Source):** Human embryonic kidney cell, HEK293-derived mouse IL-1 beta/IL-1F2 protein**蛋白结构 (Structure):**

该蛋白不含标签

**基因 ID:** NP\_032387**氨基酸序列:**

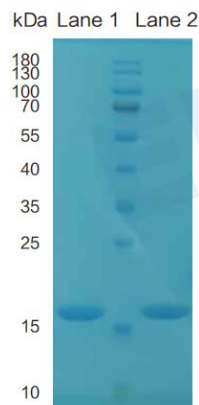
Val118-Ser269

**分子量大小(MW):**

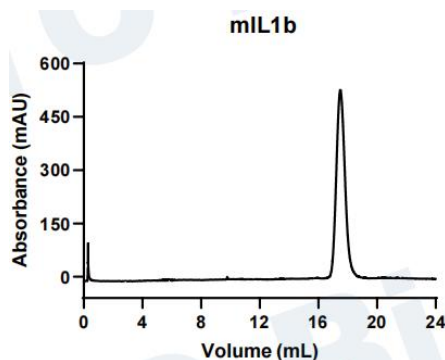
17.5 kDa

**纯度 (Purity) :**

&gt; 95%, determined by SDS-PAGE.

**SDS-PAGE**

2 ug/lane protein was resolved with SDS-PAGE under non-reducing (NR) and reducing (R) conditions and visualized by Coomassie Blue staining.

**Gel filtration**

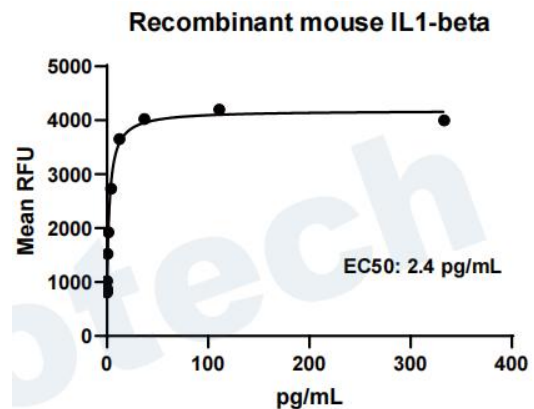
Size-exclusion chromatography of recombinant

**内毒素含量(Endotoxin):** <0.010 EU per 1 ug of the protein by the LAL method.**制剂(Formulation):**

Solution protein.

Dissolved in sterile PBS buffer.

This solution can be diluted into other aqueous buffers. Centrifuge the vial prior to opening.

**活性检测 (Biological Activity) :**

Recombinant mouse IL1b stimulates cell proliferation of D10.G4.1 mouse helper T cells.

**储存与运输(Storage):**

Avoid repeated freeze-thaw cycles.

It is recommended that the protein be aliquoted for optimal storage.

36 months from date of receipt, -20 to -70 °C as supplied.

**产品背景介绍 (Production):**

Interleukin 1 is a name that designates two pleiotropic cytokines, IL-1 alpha (IL-1F1) and IL-1 beta (IL-1F2), which are the products of distinct genes. IL-1 alpha and IL-1 beta are structurally related polypeptides that share approximately 17% amino acid (aa) identity in mouse. Both proteins are produced by a wide variety of cells in response to inflammatory agents, infections, or microbial endotoxins. While IL-1 alpha and IL-1 beta are regulated independently, they bind to the same receptor and exert identical biological effects. The mouse IL-1 beta cDNA encodes a 269 aa precursor. A 117 aa propeptide is cleaved



intracellularly by the cysteine protease IL-1 beta-converting enzyme (Caspase-1/ICE) to generate the active cytokine. The 17 kDa mature mouse IL-1 beta shares 90% aa sequence identity with cotton rat and rat and 65%-78% identity with canine, equine, feline, human, porcine, and rhesus IL-1 beta.

