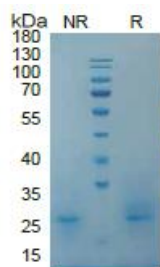
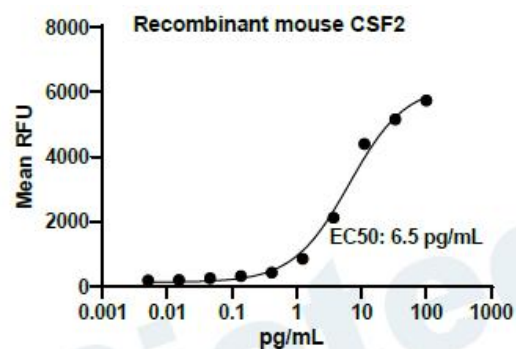


CHASELECTION**Recombinant Mouse CSF2, Tag Free**

货号(Catalog Number): CY141FXXXX(L)

别名(synonym):Colony-stimulating factor; CSF; CSF2; CSF-2;
GM-CSF; GM-CSF; Molgramostim; molgramostin**来源(Source):** Human embryonic kidney cell,
HEK293-derived mouse CSF2 protein**蛋白结构 (Structure):** 该蛋白不含标签**基因 ID:** P01587**氨基酸序列:** Ala18-Lys141**分子量大小(MW):**14.1 kDa**纯度 (Purity) :**

> 95%, determined by SDS-PAGE

SDS-PAGE4 ug/lane protein was resolved with SDS-PAGE
under non-reducing (NR) and reducing (R) conditions
and visualized by Coomassie Blue staining.**活性检测 (Biological Activity) :**Recombinant mouse CSF (Catalog # MF-2042)
stimulates cell proliferation of the DA3 mouse
myeloma cells.**内毒素含量 (Endotoxin) :**

<0.010 EU per 1 ug of the protein by the LAL method

制剂(Formulation):

Solution protein.

Dissolved in sterile PBS buffer.

This solution can be diluted into other aqueous buffers.
Centrifuge the vial prior to opening.**储存与运输(Storage):**

Avoid repeated freeze-thaw cycles.

It is recommended that the protein be aliquoted for
optimal storage.36 months from date of receipt, -20 to -70 °C as
supplied.

Shipping with dry ice

产品背景介绍 (Production) :

CSF2 was initially characterized as a factor that can support the in vitro colony formation of granulocyte-macrophage progenitors. It is also a growth factor for erythroid, megakaryocyte, and eosinophil progenitors. GM-CSF is produced by a number of different cell types (including T cells, B cells, macrophages, mast cells, endothelial cells, fibroblasts, and adipocytes) in response to cytokine or inflammatory stimuli. On mature hematopoietic cells, GM-CSF is a survival factor for and activates the effector functions of granulocytes, monocytes/macrophages, and eosinophils. GM-CSF promotes a Th1 biased immune response, angiogenesis, allergic inflammation, and the development of autoimmunity. It shows clinical effectiveness in ameliorating chemotherapy-induced neutropenia, and GM-CSF transfected tumor cells are utilized as cancer vaccines. The 22 kDa glycosylated GM-CSF, similar to IL-3 and IL-5, is a cytokine with a core of four bundled alpha-helices. Mature mouse GM-CSF shares 49%-54% amino acid sequence identity with canine, feline, human, and porcine

上海逐典生物科技有限公司

上海市自由贸易试验区李冰路 399 号抗体楼 5 楼 5018 室

www.chaselection.com

GM-CSF and 69% with rat GM-CSF. GM-CSF exerts its biological effects through a heterodimeric receptor complex composed of GM-CSF R alpha /CD116 and the signal transducing common beta chain (CD131) which is also a component of the high-affinity receptors for IL-3 and IL-5. In addition, GM-CSF binds a naturally occurring soluble form of GM-CSF R alpha.

