

**CHASELECTION****Recombinant Human LIF, Tag Free**

货号(Catalog Number): CY076FXXXX(L)

**别名(synonym):**

CDF; DIA; HILDA; Leukemia Inhibitory Factor; MLPLI .

**来源(Source): HEK293****蛋白结构 (Structure):**

该蛋白不含标签

**基因 ID:** P15018**氨基酸序列:**

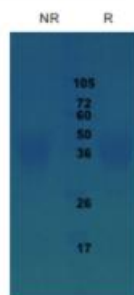
Ser23-Phe202

**分子量大小(MW):**

19.7kDa

**纯度 (Purity) :**

&gt; 95%, determined by SDS-PAGE

**SDS-PAGE**

4 ug/lane protein was resolved with SDS-PAGE under non-reducing (NR) and reducing (R) conditions and visualized by Coomassie blue staining.

**内毒素含量 (Endotoxin) :**

&lt;0.10 EU per 1 µg of the protein by the LAL method

**制剂(Formulation):**

Solution protein. Dissolved in sterile PBS buffer. This solution can be diluted into other aqueous buffers.

Centrifuge the vial prior to opening.

**储存与运输(Storage):**

Avoid repeated freeze-thaw cycles.

It is recommended that the protein be aliquoted for optimal storage.

36 months from date of receipt, -20 to -70 °C as supplied.

Shipping with dry ice

**产品背景介绍 (Production) :**

Leukemia inhibitory factor (LIF) is a pleiotropic glycoprotein belonging to the IL-6 family of cytokines. It is involved in growth promotion and cell differentiation of different types of target cells, influence bone metabolism, cachexia, neural development, embryogenesis, and inflammation. LIF has potent proinflammatory properties, being the inducer of the acute phase protein synthesis and affecting cell recruitment into the area of damage or inflammation. LIF is also one of the cytokines that are capable to regulate the differentiation of embryonic stem cells, hematopoietic, and neuronal cells. LIF binds to the specific LIF receptor (LIFR- ) which forms a heterodimer with a specific subunit common to all members of that family of receptors, the GP130 signal-transducing subunit. This leads to the activation of the JAK/STAT and MAPK cascades. Due to its polyfunctional activities, LIF is involved in the pathogenic events and development of many diseases of various origins.

